

New shower channel

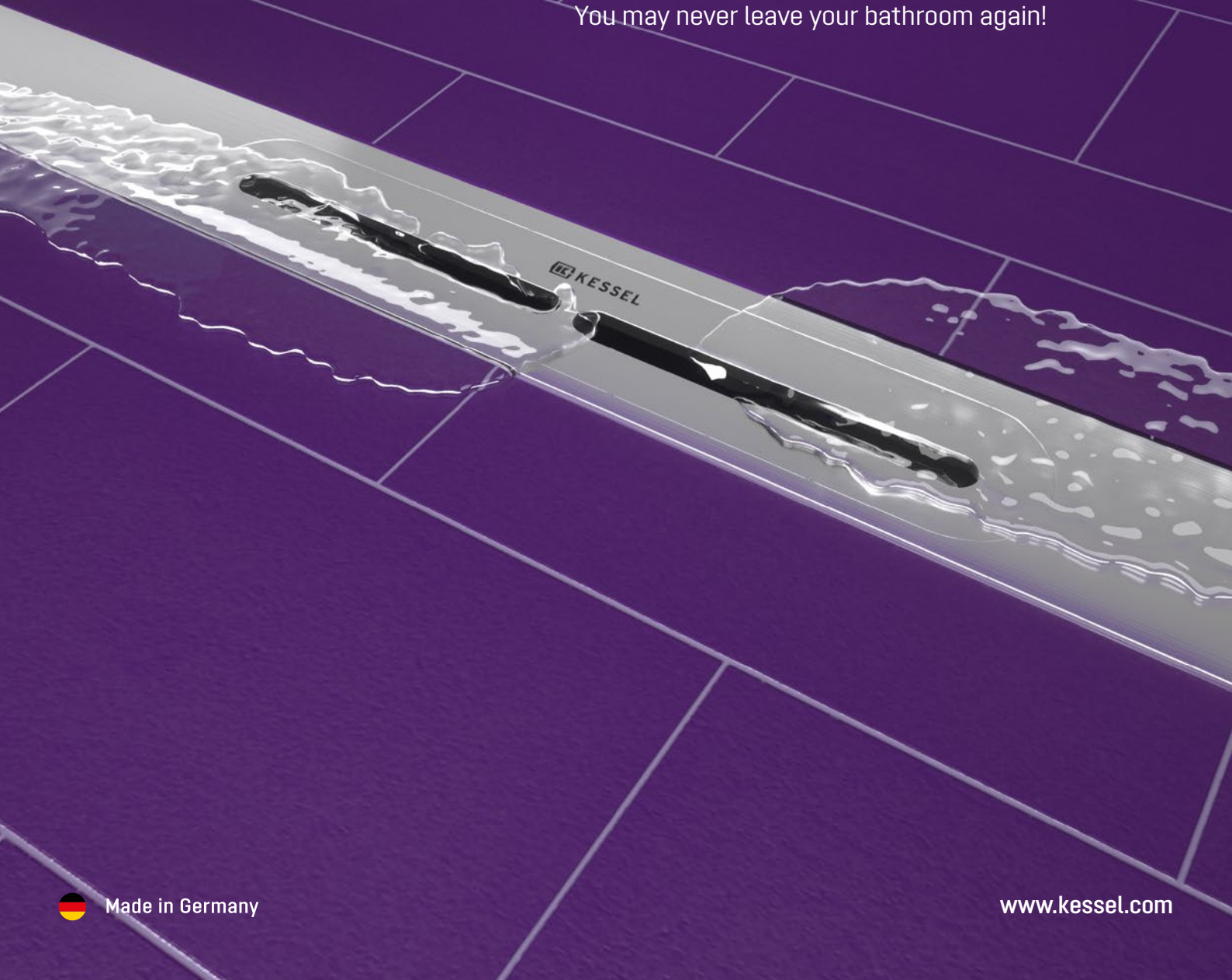
Linearis Infinity

 **KESSEL**

infinite at last

The *Linearis Infinity* AISI 316
extendable shower channel.

You may never leave your bathroom again!



Made in Germany

www.kessel.com



One bathroom.

Unlimited possibilities.

Enjoy unlimited freedom in bathroom design –
with the new *Linearis Infinity*.

Our new shower channel made from AISI 316 stainless steel is not only infinitely elegant, but is also endlessly versatile. It is available in various colours and lengths, can be extended as required and even built around corners. The possibilities for individual bathroom design are finally infinite with the *Linearis Infinity*.

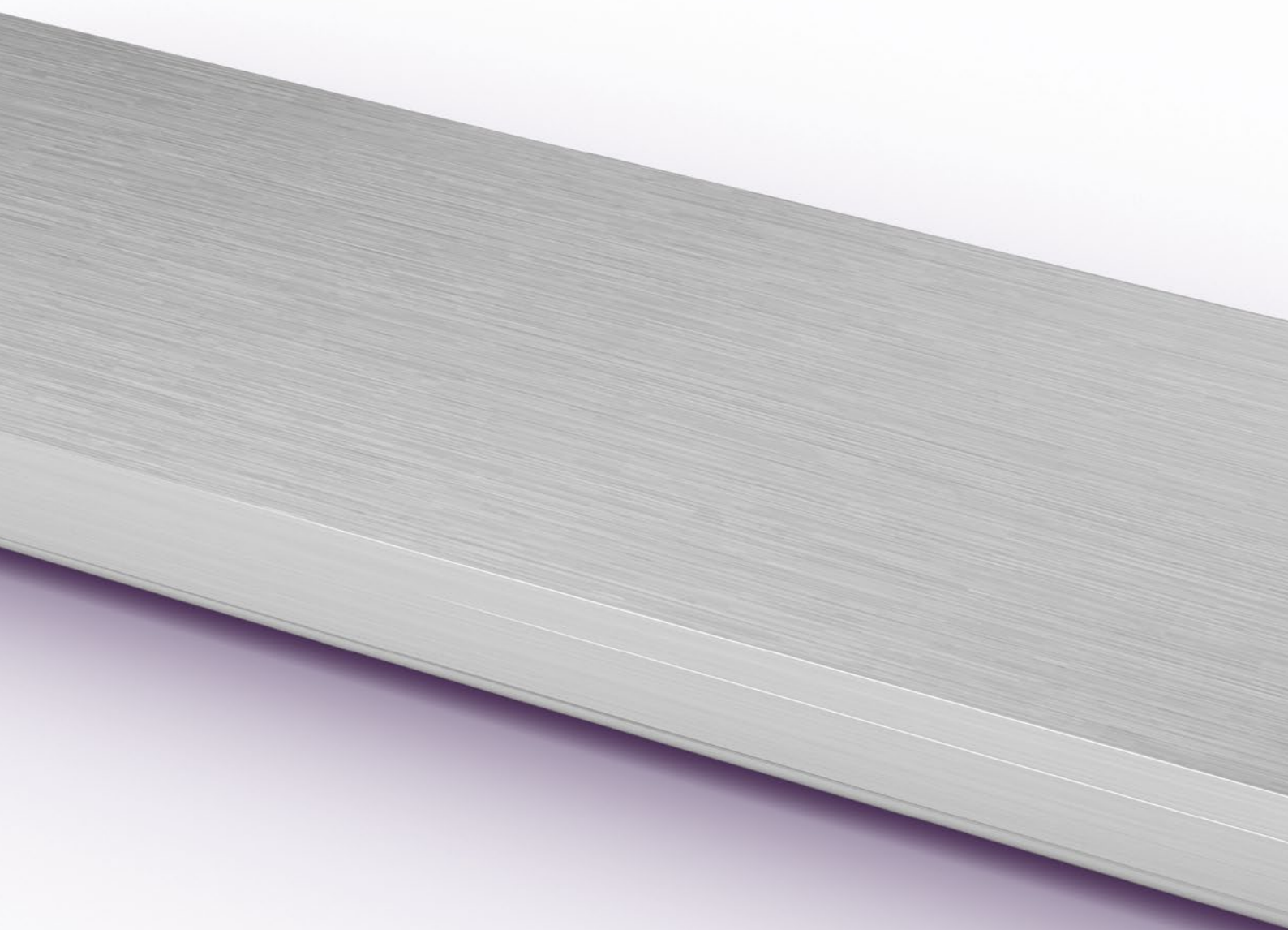
Shower channel *Linearis Infinity*
Length: 1,100 mm



Discover online

www.kessel.com/linearis-infinity





Hygienic



Corrosion-resistant



Increased chloride / salt resistance

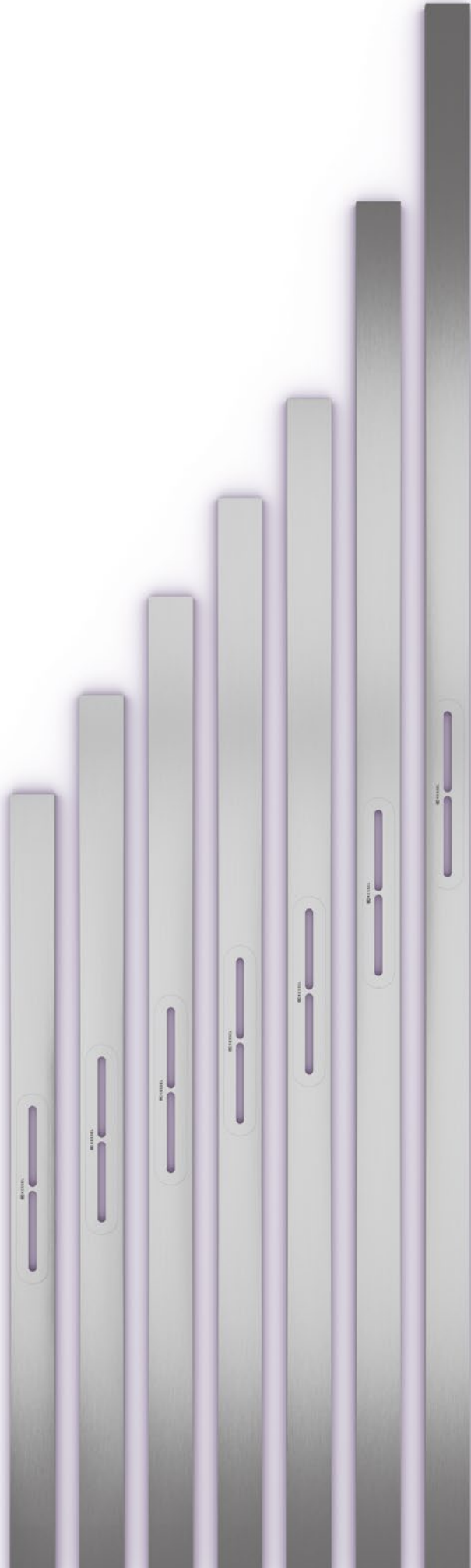
AISI 316 stainless steel

Corrosion? ... problem solved

Not all stainless steel is the same. AISI 316 stainless steel is of particularly high-quality and is corrosion resistant. It is traditionally used in the chemical industry and in swimming pools – and now, for the first time, in a shower channel. The *Linearis Infinity* is made from AISI 316 stainless steel, guaranteeing permanent corrosion resistance to bathroom wastewater – a flawless surface finish.



Length profiles: 800 | 900 | 1,000 | 1,100 | 1,200 | 1,400 | 1,600 mm



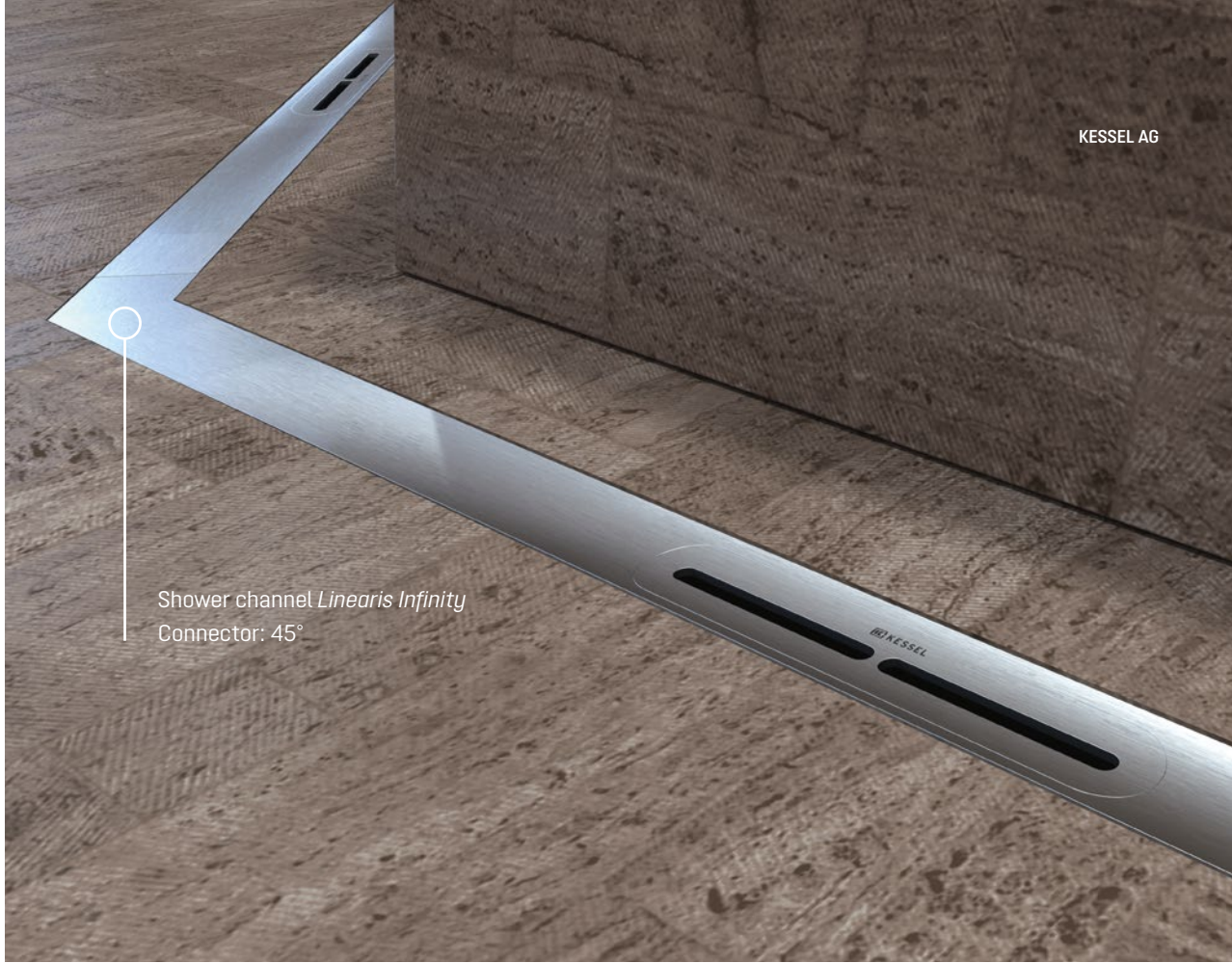
Available lengths

The choice is yours!

No matter how unusual your design or available space, the *Linearis Infinity* guarantees the perfect solution. It is available in seven lengths from 800 to 1,600 mm and is endlessly extendible. The shower channel cannot only be extended, but is also extremely easy to shorten and can therefore be adapted individually to the tile profile.



Can be shortened to any length using connecting pieces up to 60 mm on both sides



Shower channel *Linearis Infinity*
Connector: 45°



Shower channel *Linearis Infinity*
Surface: AISI 316 stainless steel, brushed



Shower channel *Linearis Infinity*
Length: 1,400 mm



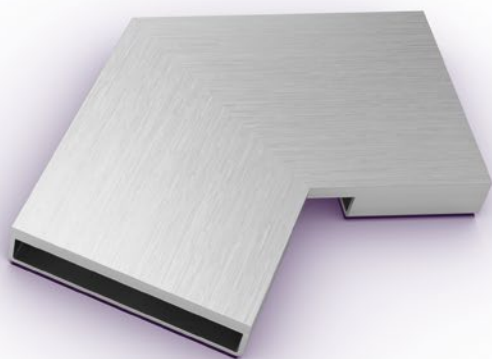
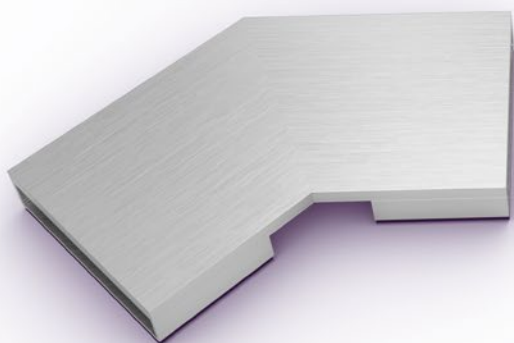
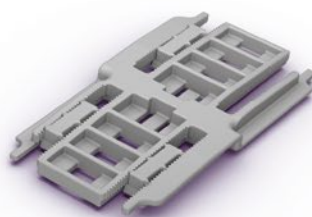
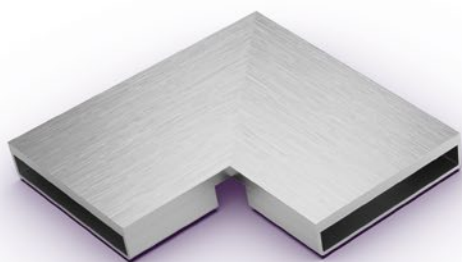
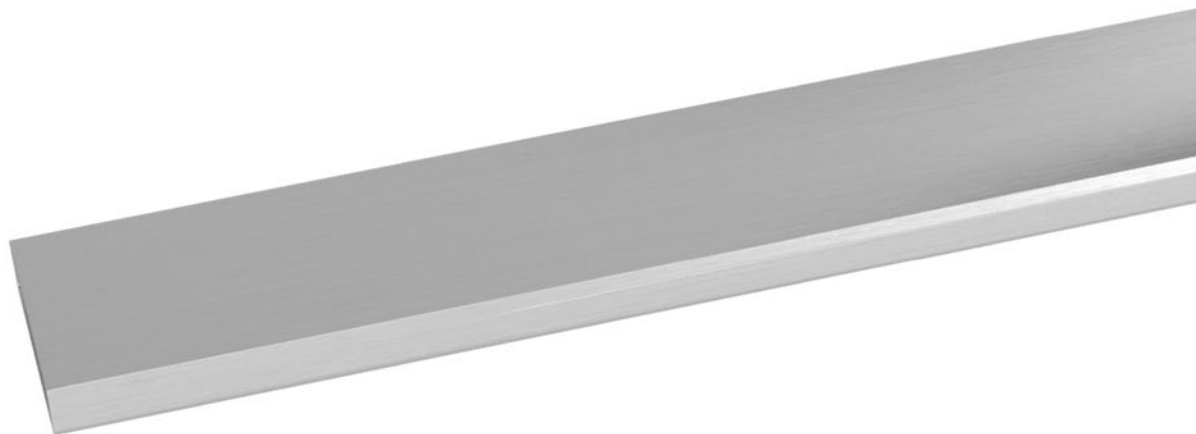
Shower channel *Linearis Infinity*
Surface: AISI 361 stainless steel, brushed
Connector: straight line

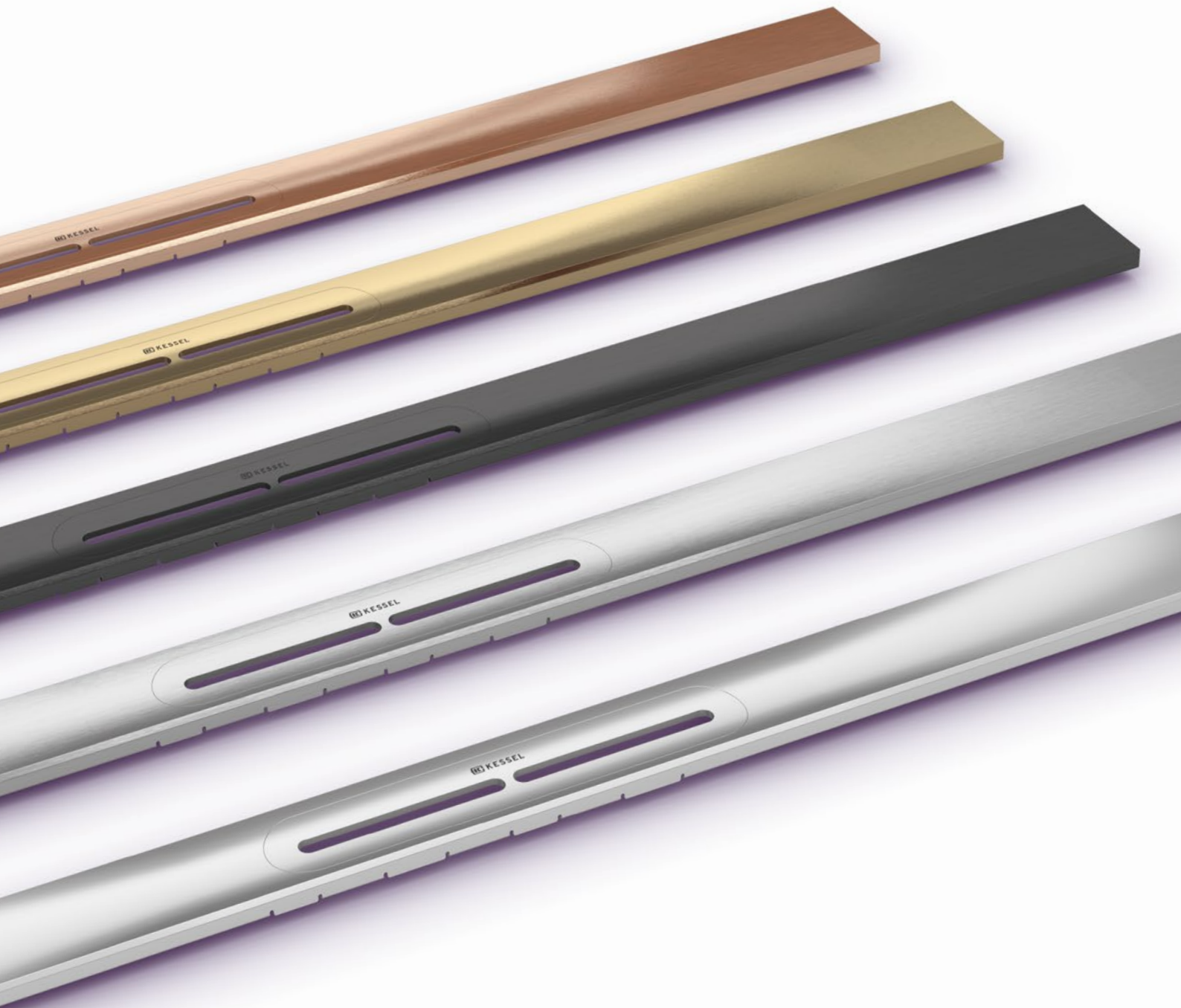
Easy extension

Short, long, left or right

You can now think outside the box for your bathroom design and make your ideas a reality. The connection pieces and practical push-fit system enable an easy connection of multiple shower channels with each other, in a straight line and even around corners with 30°, 45° and 90° angles.







Colour selection

Stainless steel – like you have never seen before.

The *Linearis Infinity* made from AISI 316 stainless steel is a real eye-catcher in the bathroom – not least owing to its fine surface colours. Whether classic brushed, polished stainless steel or unusual brushed surfaces like copper, bronze or black: you're spoilt for choice when it comes to surface colour.

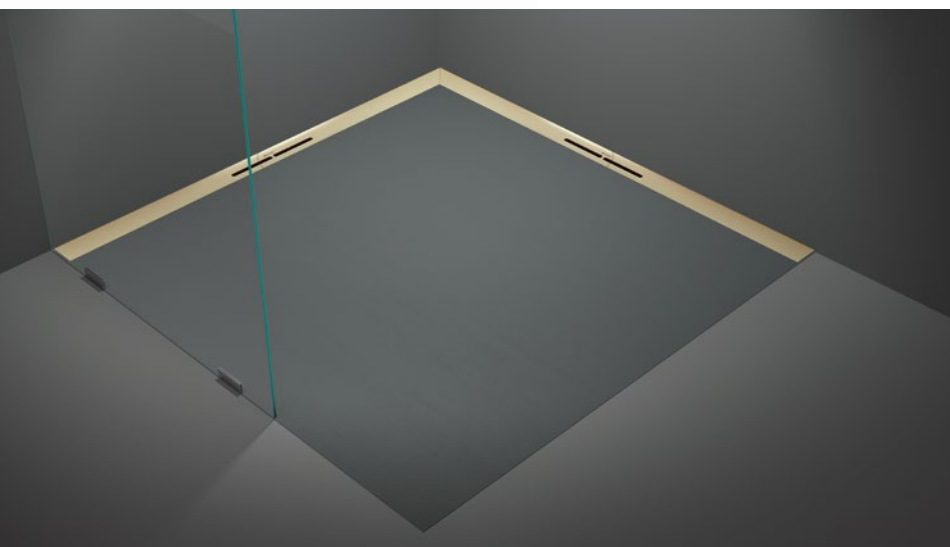
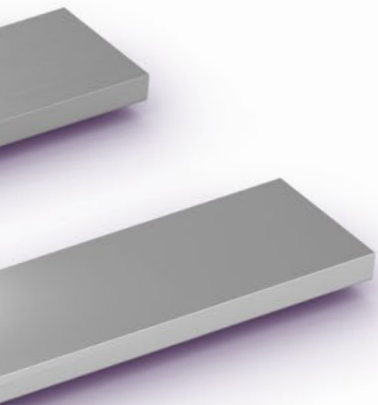
-  Stainless steel, copper, brushed
-  Stainless steel, bronze, brushed
-  Stainless steel, black, brushed
-  Stainless steel, brushed
-  Stainless steel, polished

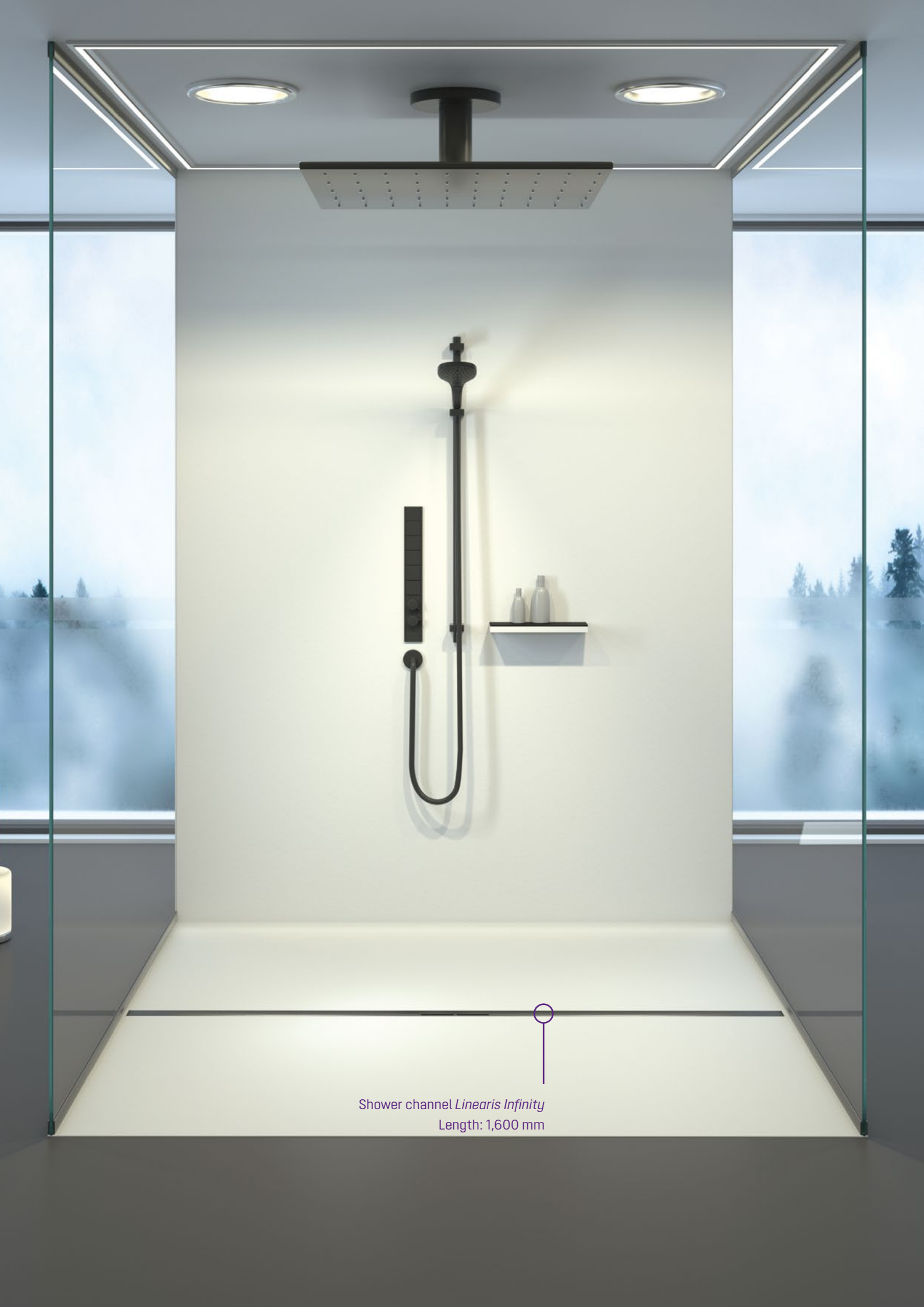
Discover the diverse possibilities of the *Linearis Infinity* – with our shower channel configurator.



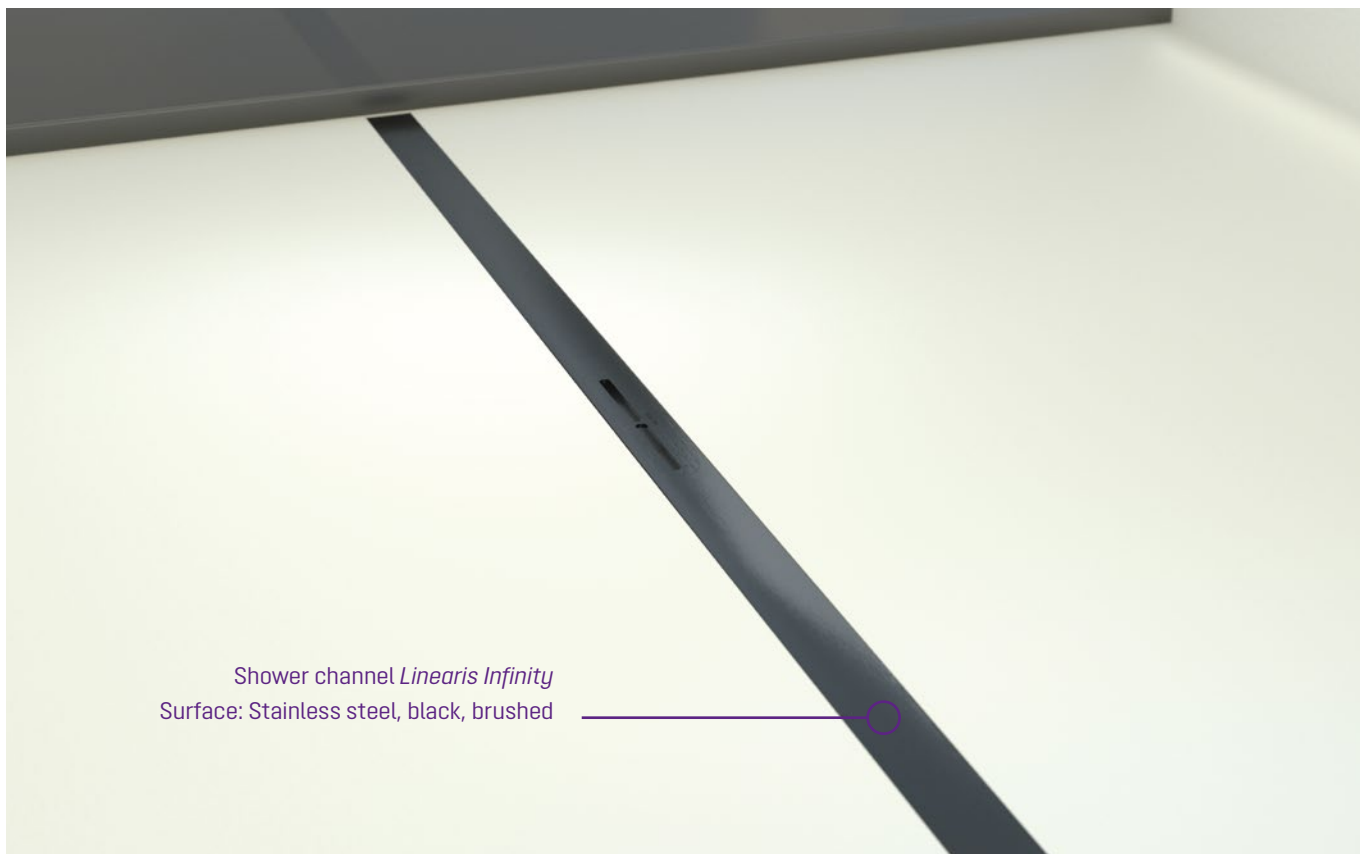
Discover now

www.kessel.com/configurator-infinity





Shower channel *Linearis Infinity*
Length: 1,600 mm



Shower channel *Linearis Infinity*
Surface: Stainless steel, black, brushed





60 mm overall height with *Megastop* / 24 mm odour trap



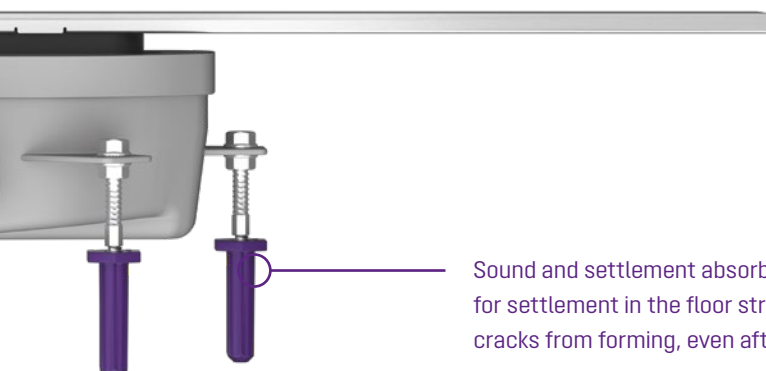
90 mm overall height with 50 mm odour trap



Low installation height

Compact size – high performance

With its low minimum installation height of only 60 mm, the *Linearis Infinity* is our lowest profile shower channel, which also offers a high flow rate of up to 0.5 l/s. The version with an installation height of 90 mm offers a flow rate of up to 0.8 l/s.



Sound and settlement absorbers compensate for settlement in the floor structure and prevent cracks from forming, even after many years of use



Can be slid along the vertical axis by up to 6 mm



Can be slid along the horizontal axis by up to 12 mm



Can be swung on its own axis by up to 2°

2D adjustability

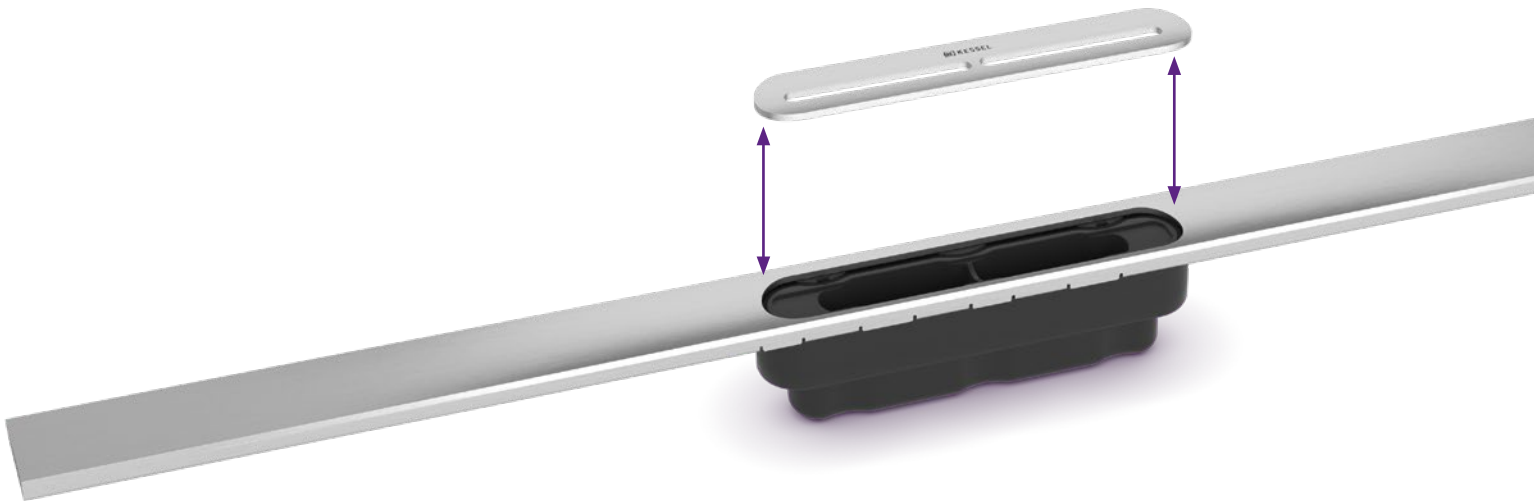
A new dimension in flexibility

The upper section of the *Linearis Infinity* shower channel can be slid on both axis and therefore can be perfectly adapted to the tile profile.

Cleaning & maintenance

Quick and easy cleaning – inside and out!

The *Linearis Infinity* center cover can be removed effortlessly for quick and easy cleaning and maintenance.

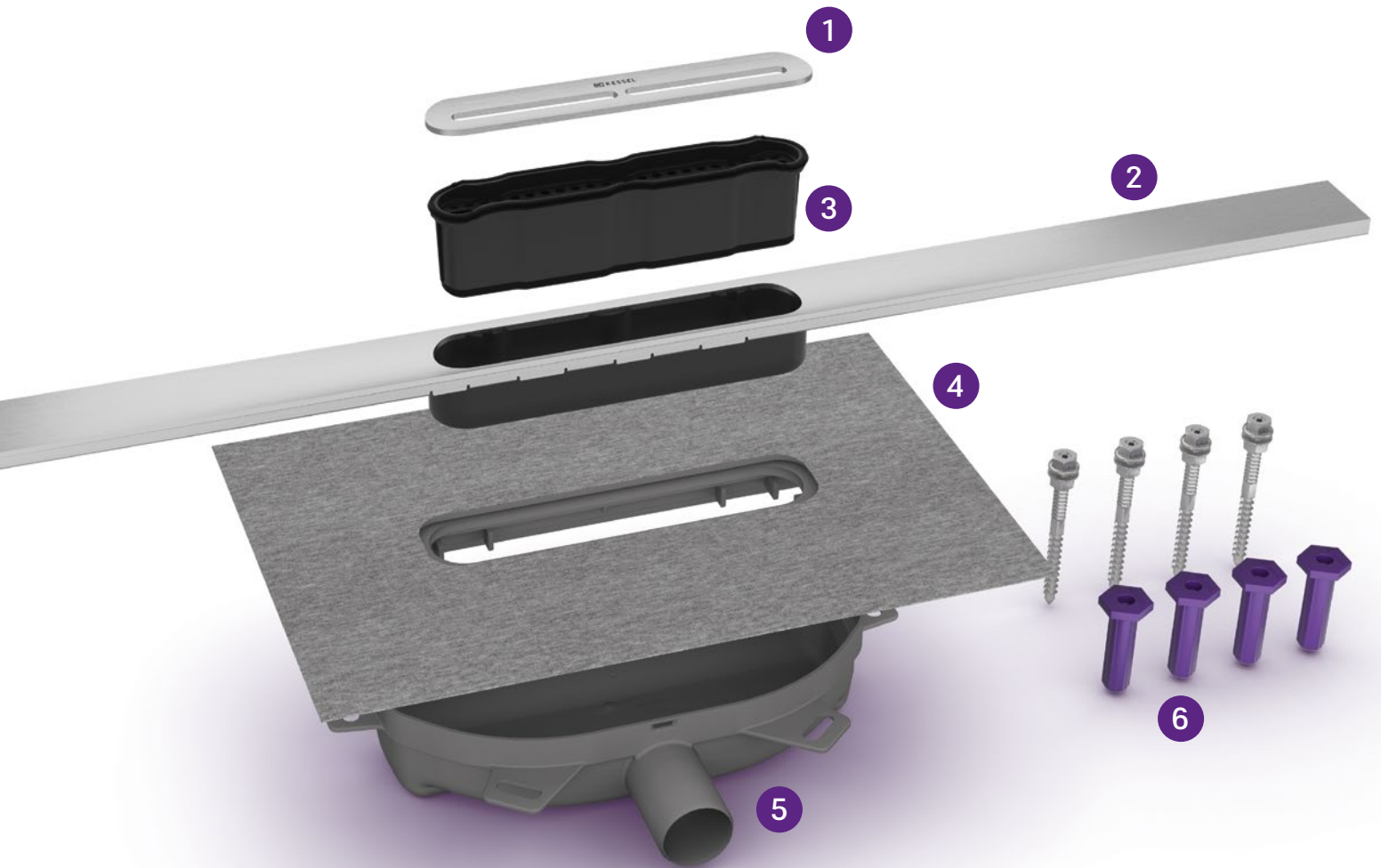


Easy cleaning of the whole cross-section

All-in-one box

Everything you need

The *Linearis Infinity* keeps installation simple. The all-in-one box means all shower channel components are included as well as helpful parts to make installation even easier.



1

Drain cover

The removable insert facilitates cleaning and maintenance.

2

Channel profile

The shower channel can be individually shortened and extended – linearly with concealed push-fit connections and around the corner with angled connection pieces.

3

Odour trap

The *Megastop* odour trap with water seal protects against unpleasant smells, even if the shower is rarely used.

4

Clip-on flange with waterproofing membrane

The factory-mounted waterproofing membrane enables drainage at the waterproofing level in accordance with DIN 18534-1-W3-I.

5

Polymer (PP) drain body

Lightweight drain body with horizontal outlet. The waterproofing level can be drained continuously with the seepage opening.

6

Sound and settlement absorbers

The sound and settlement absorbers minimise noise transfer to other parts of the building during showering and can be installed in all types of floors.

Linearis Infinity 60

The narrow Linearis Infinity channel for walk-in showers is suitable for indoor linear drainage for household and commercial use. The channel profile made of AISI 316 stainless steel can be individually shortened and can be extended straight or at three (30, 45 and 90 degree) angles.

The drain body made of PP is equipped with sound and settlement absorbers. The channel contains a clip-on flange with factory-mounted waterproofing membrane according to EN 1253-1 and DIN 18534-1-W3-I. The channel profile can be pushed in the lengthwise and transverse direction in the clip-on flange to level out construction tolerance. Open seepage water openings, without flooding of the waterproofing level in the event of backwater.

With Odour trap with sealing water height of 24 mm or including *Megastop* mechanical odour trap with water seal.

Version:

- Type of waterproofing layer: factory-mounted waterproofing membrane
- Seepage opening: open
- Water exposure class in accordance to DIN 18534-1 (up to and including): W3-I
- Nominal size (Ø): 40 mm

Drain body:

- Length: 264 mm
- Width: 111 mm
- Min. design height: 60 mm
- Outlet size (Ø): 40 mm OD, lateral
- Material of drain body: PP

Cover features:

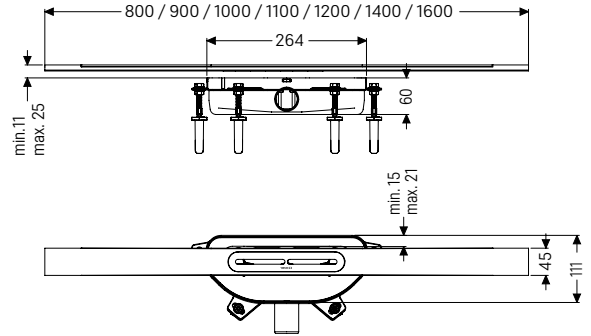
- Cover material: AISI 316 stainless steel
- Min. flooring height: 11 mm
- Max. flooring height: 25 mm
- Load class: K 3 (EN 1253-1)
- Width: 45 mm
- Choose - length, color, odour trap

Discharge rate (l/s) with odour trap:

- with 10 mm threshold: 0.4 l/s, with 20 mm threshold: 0.5 l/s

Discharge rate (l/s) with Megastop:

- with 10 mm threshold: 0.2 l/s, with 20 mm threshold: 0.4 l/s



Odour trap with 24 mm water seal

Channel length in mm	Art. no.
Surface: Stainless steel, brushed	
800	45 100.08
900	45 100.09
1,000	45 100.10
1,100	45 100.11
1,200	45 100.12
1,400	45 100.14
1,600	45 100.16

Odour trap Megastop

Channel length in mm	Art. no.
Surface: Stainless steel, brushed	
800	45 300.08
900	45 300.09
1,000	45 300.10
1,100	45 300.11
1,200	45 300.12
1,400	45 300.14
1,600	45 300.16

Surface: Stainless steel, polished

800	45 101.08
900	45 101.09
1,000	45 101.10
1,100	45 101.11
1,200	45 101.12
1,400	45 101.14
1,600	45 101.16

Surface: Stainless steel, polished

800	45 301.08
900	45 301.09
1,000	45 301.10
1,100	45 301.11
1,200	45 301.12
1,400	45 301.14
1,600	45 301.16

Surface: Stainless steel, black, brushed

800	45 102.08
900	45 102.09
1,000	45 102.10
1,100	45 102.11
1,200	45 102.12

Surface: Stainless steel, black, brushed

800	45 302.08
900	45 302.09
1,000	45 302.10
1,100	45 302.11
1,200	45 302.12

Surface: Stainless steel, copper, brushed

800	45 103.08
900	45 103.09
1,000	45 103.10
1,100	45 103.11
1,200	45 103.12

Surface: Stainless steel, copper, brushed

800	45 303.08
900	45 303.09
1,000	45 303.10
1,100	45 303.11
1,200	45 303.12

Surface: Stainless steel, bronze, brushed

800	45 104.08
900	45 104.09
1,000	45 104.10
1,100	45 104.11
1,200	45 104.12

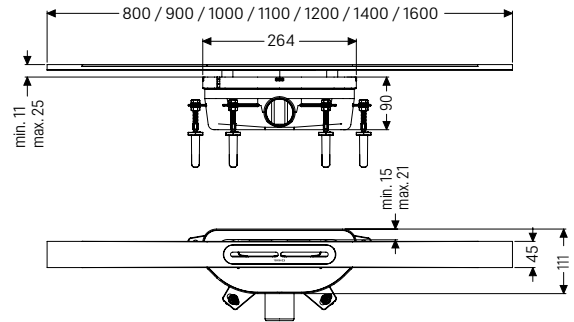
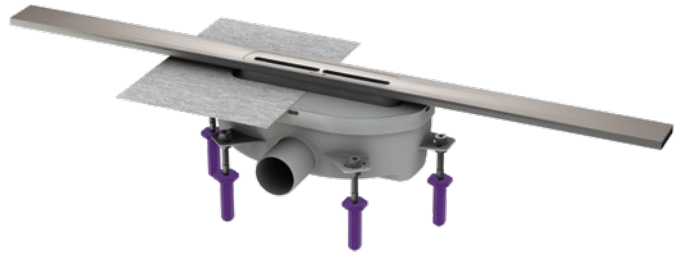
Surface: Stainless steel, bronze, brushed

800	45 304.08
900	45 304.09
1,000	45 304.10
1,100	45 304.11
1,200	45 304.12

Linearis Infinity 90

The narrow Linearis Infinity channel for walk-in showers is suitable for indoor linear drainage for household and commercial use. The channel profile made of AISI 316 stainless steel can be individually shortened and can be extended straight or at three (30, 45 and 90 degree) angles.

The drain body made of PP is equipped with sound and settlement absorbers. The channel contains a clip-on flange with factory-mounted waterproofing membrane according to EN 1253-1 and DIN 18534-1-W3-I. The channel profile can be pushed in the lengthwise and transverse direction in the clip-on flange to level out construction tolerance. Open seepage water openings, without flooding of the waterproofing level in the event of backwater.



Version:

- Type of waterproofing layer: factory-mounted waterproofing membrane
- Seepage opening: open
- Water exposure class in accordance to DIN 18534-1 (up to and including): W3-I
- Sealing water height: 50 mm
- General characteristics:
- Nominal size (Ø): 50 mm

Drain body:

- Length: 264 mm
- Width: 111 mm
- Min. design height: 90 mm
- Outlet size (Ø): 50 mm OD, lateral
- Material of drain body: PP

Cover features:

- Cover material: AISI 316 stainless steel
- Min. flooring height: 11 mm
- Max. flooring height: 25 mm
- Load class: K 3 (EN 1253-1)
- Width: 45 mm
- Choose - length, color, odour trap

Discharge rate (l/s):

- with 10 mm threshold: 0.6 l/s, with 20 mm threshold: 0.8 l/s

Odour trap with 50 mm water seal

Channel length in mm	Art. no.
Surface: Stainless steel, brushed	
800	45 200.08
900	45 200.09
1,000	45 200.10
1,100	45 200.11
1,200	45 200.12
1,400	45 200.14
1,600	45 200.16
Surface: Stainless steel, polished	
800	45 201.08
900	45 201.09
1,000	45 201.10
1,100	45 201.11
1,200	45 201.12
1,400	45 201.14
1,600	45 201.16
Surface: Stainless steel, black, brushed	
800	45 202.08
900	45 202.09
1,000	45 202.10
1,100	45 202.11
1,200	45 202.12
Surface: Stainless steel, copper, brushed	
800	45 203.08
900	45 203.09
1,000	45 203.10
1,100	45 203.11
1,200	45 203.12
Surface: Stainless steel, bronze, brushed	
800	45 204.08
900	45 204.09
1,000	45 204.10
1,100	45 204.11
1,200	45 204.12

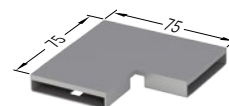
Connecting pieces



Straight connector
for straight connection of
two channels

Art. no. 45 103

Angle connectors
with two connectors, article
45 103, for axially restrained
extension



90°	Art. no.
Stainless steel, brushed	45 100.01
Stainless steel, polished	45 101.01
Stainless steel, black, brushed	45 102.01
Stainless steel, copper, brushed	45 103.01
Stainless steel, bronze, brushed	45 104.01

Accessories



Megastop
Odour, foam and
pest barrier including
hair filter

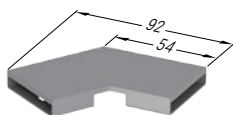
Art. no. 45 100



Hair filter
made from polymer

Art. no. 45 102

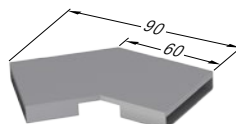




45°

Art. no.

Stainless steel, brushed	45 100.02
Stainless steel, polished	45 101.02
Stainless steel, black, brushed	45 102.02
Stainless steel, copper, brushed	45 103.02
Stainless steel, bronze, brushed	45 104.02



30°

Art. no.

Stainless steel, brushed	45 100.03
Stainless steel, polished	45 101.03
Stainless steel, black, brushed	45 102.03
Stainless steel, copper, brushed	45 103.03
Stainless steel, bronze, brushed	45 104.03



This is KESSEL.

Since 1963, KESSEL has stood like no other company for innovative and reliable drainage technology. We have established ourselves as the impulse generator in the industry and are now a worldwide premium supplier.



Competent partner
since 1963



International player
60+
countries



Innovative premium supplier
3.000+
products



Safe employer
550+
employees



Sustainable company
110+ mio. €
in sales

During the production of our products as well as their operation on-site, we keep quality assurance, environmental protection and worker's safety at the top of our list.

We also place great value in the relationship with our customer, providing consultation, installation support, commissioning and after-sales service.

One thing is certain, our innovation, quality, reliability and service is number one in the industry.

KESSEL – Leading in drainage



Made in Germany





KESSEL Headquarters Lenting, Germany

Leading in drainage.

No matter whether the task involves discharging water, wastewater treatment or backwater protection: if the best solution is required, there is no option but KESSEL.

Backwater protection

Pump technology

Separator technology

Drainage technology



For further information
visit

www.kessel.com

For more information,
please visit:

[www.kessel.com/
linearis-infinity](http://www.kessel.com/linearis-infinity)



Subject to technical modifications.

KESSEL AG

Bahnhofstraße 31 • 85101 Lenting • Germany

www.kessel.com

016-268 P24/CK 03/21