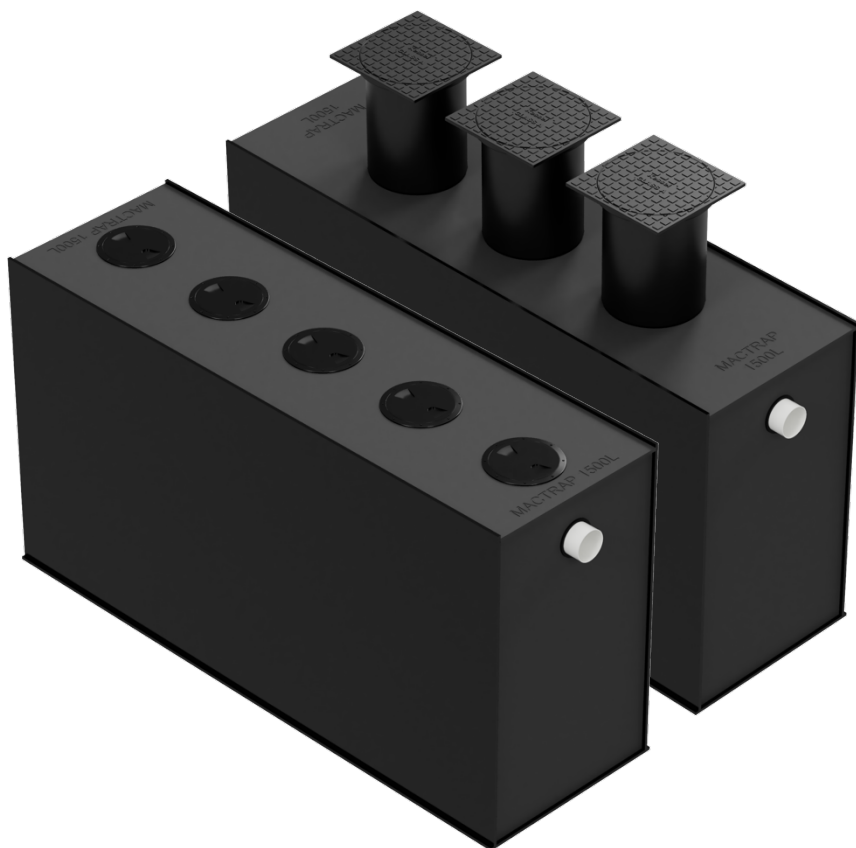


FUEL/OIL

MTFO2000- FUEL OIL SEPARATOR DATASHEET

ABOVE OR BELOW GROUND INSTALLATION



Product code	MTFO2000S	MTFO2000A/D
Total Volume	2520 l	2520 l
Fuel Oil Containment	300 l	300 l
Length	3000 mm	3000 mm
Width	800 mm	800 mm
Height	1050 mm	1500 ¹ mm
Inlet invert	875 mm	875 mm
Outlet invert	825 mm	825 mm

¹ Includes height of riser

Accessories

Class A or D sampling chamber	MTIC350A/D
-------------------------------	------------

OPERATION

Mactrap Fuel/Oil separation systems intercept mineral oils and fuels collected in wastewater from sources such as petrol stations, car washes, vehicle repair garages and industry. These fuel oil separators are amongst the safest and most effective light oil capture systems available.

Wastewater enters the separator and the heavier sludge and sediment sink to the bottom of the chamber while at the same time the fuel oils rise to the surface. Cleaned wastewater exits the separator without allowing any of the separated sludge or fuel oils to leave the separating chamber.

Self-Actuated Closure Lock

The fuel oil separator is equipped with a self-activated closure lock which completely closes the outlet of the separator when the separator reaches its maximum fuel oil storage volume. This prevents the escape of fuel oils into the drainage system.

Alarm Units

To reduce the chances of the separator shutting down due to overcapacity in the fuel oil storage chamber, an alarm unit can be installed which monitors the fuel oil level. Mactrap recommends the installation of these alarm units in high fuel oil applications.







Clean Out

The frequency of clean out is totally dependent on how much fuel oil is intercepted. Under normal usage, Mactrap recommends at least two clean outs per year, however heavy use or spillage may require more frequent clean outs. In normal circumstances separator are cleaned out by a vacuum truck. The entire contents are drained and removed before refilling the separator for continued operation.

COVERS AND RISERS

Mactrap fuel oil separators can be installed in ground or above ground. The upper surface of the separator is not load bearing, so if the installation will carry load, then risers and covers must be installed.

- Mactrap separators are available with HDPE trafficable lids in Class A (pedestrian) and Class D (vehicular).
- Flexible coupling allows easy installation into the surrounding medium and are fully sealed.
- Surrounding concrete or other medium must be engineered to the appropriate loading.

Type	Class	Typical Use	Nominal Wheel Loading (kg)	Serviceability Design Load (kN)	Ultimate Limit State Design (kN)
	A	Areas accessible strictly by pedestrians. Not suited to vehicles. Purpose – residential backyards, walkways not accessible by vehicles.	330kg	6.7kN	10kN
	D	Major roads including freeway and motorway shoulders. Warehouse and loading docks. Purpose – major roads.	8,000kg	160kN	240kN

WARRANTY

The Mactrap sediment trap is warranted for impermeability, fitness for use and structural stability for five (5) years. The manufactured unit is warranted for quality of manufacture for one (1) year provided the separator is installed and operated in accordance with the specifications provided with each unit. Mactrap warranty does not include maintenance and servicing of the sediment trap.

