

# LINT TRAP

## 3M LINT TRAP DATASHEET

### SMALL LAUNDRIES



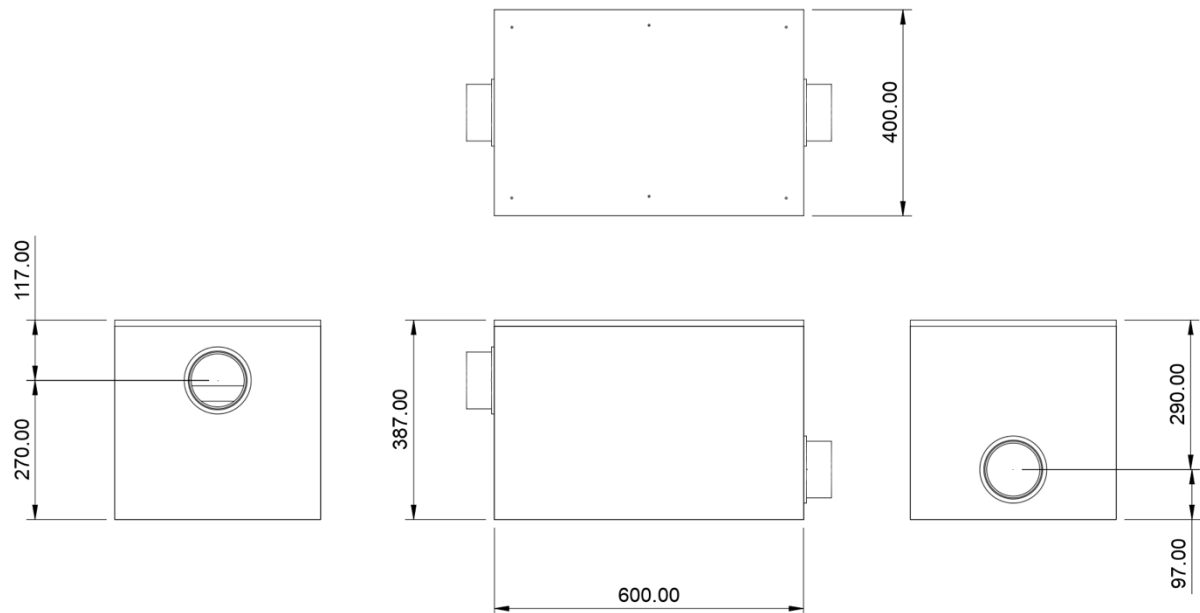
MTFT3M Lint trap – above ground only

Product code	MTLT3MS	n/a
Installation	Above ground	Below ground
Commercial Machine Capacity	3 Domestic or 1 Commercial	n/a
Treatment	Filtration	n/a
Lint Containment Area (65%)	660cm <sup>2</sup>	n/a
Length	600 mm	n/a
Width	400 mm	n/a
Height	387 mm	n/a
Weight	10 kgs	n/a
Inlet centre – (Base/FFL)	270/117 mm	n/a
Outlet centre – (Base/FFL)	97/290 mm	n/a
Connections	100mm DWV or request	n/a
Sampling Chamber	n/a	n/a





## DIMENSIONS



## RESIDUAL TEMPERATURE

The 3M is NOT designed for dilution of high temperature wastewater used for thermal disinfection.

Hospital laundries have strict hygiene practices that must adhere to the Australia/New Zealand Laundry Practice AS/NZS 4146:2000 which includes thermal or chemical disinfection. Thermal disinfection requires washing at a minimum of 65°C and for not less than 10 minutes. Or a minimum of 71°C and for not less than 3 minutes.

Lint trap sizing for hospital laundromats needs to include sufficient capacity to allow the wastewater to cool to a temperature required by the local council – typically this is a maximum of 40 degrees. Mactrap lint traps are available in larger sizes up to 6000 litres with sufficient capacity to dilute and cool wastewater. Contact Mactrap for more information.

## WARRANTY

The Mactrap lint trap is warranted for impermeability, fitness for use and structural stability for five (5) years. The manufactured unit is warranted for quality of manufacture for one (1) year provided the lint trap is installed and operated in accordance with the specifications provided with each unit. Mactrap warranty does not include maintenance and servicing of the lint trap.





## OPERATION

Mactrap lint traps are designed to trap fine sediment, laundry lint and discharged objects from washing machines in commercial laundries or industrial installations. Filter baskets are required because suspended particulates such as laundry lint cannot be trapped through gravity settlement.

The 3M is fitted with one mesh filter basket constructed with a mesh sized to capture objects such as buttons and coins as well as lint. The 3M is designed to manage the simultaneous outflow from three (3) domestic washing machines or one commercial washing machine.

### Water temperature

The lint trap is certified to operate with water temperatures up to 60°C. Higher continuous temperatures may cause sagging.

### Chemicals

The lint trap is tested to handle laundry and most other chemicals especially as they are usually diluted with water. Do not discharge pure benzene or concentrated sulphuric acid through the lint trap.

### Clean Out

The frequency with which the filter baskets require cleaning is totally dependent on how much lint and other particulate matter is intercepted. Lint traps are sized to allow the laundry machines to operate normally when up to 65% of the surface area of the filter basket is clogged. Clogging of more than 65% may cause backpressure to the machine discharge. Mactrap recommends that the baskets are initially cleaned weekly until a service requirement pattern is established.

The lint trap will need to be vacuum cleaned bi-annually to remove fine sediments not captured by the filter.

### Blockage Bypass

The lint trap is equipped with a blockage bypass if the filter basket is excessively clogged. The bypass is designed to protect the laundry machines; however, the operator would be in breach of their trade waste agreement when the bypass is active.

The lint trap can be optionally fitted with audible alarms to indicate when the filter basket is excessively clogged and requires cleaning.

