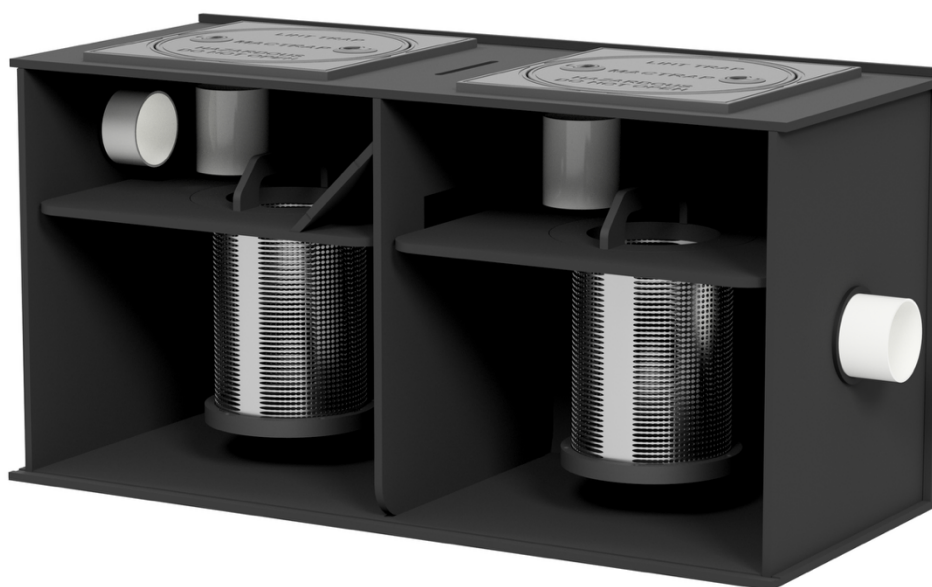


LINT TRAP

6M LINT TRAP DATASHEET

SIX MACHINE LAUNDROMAT



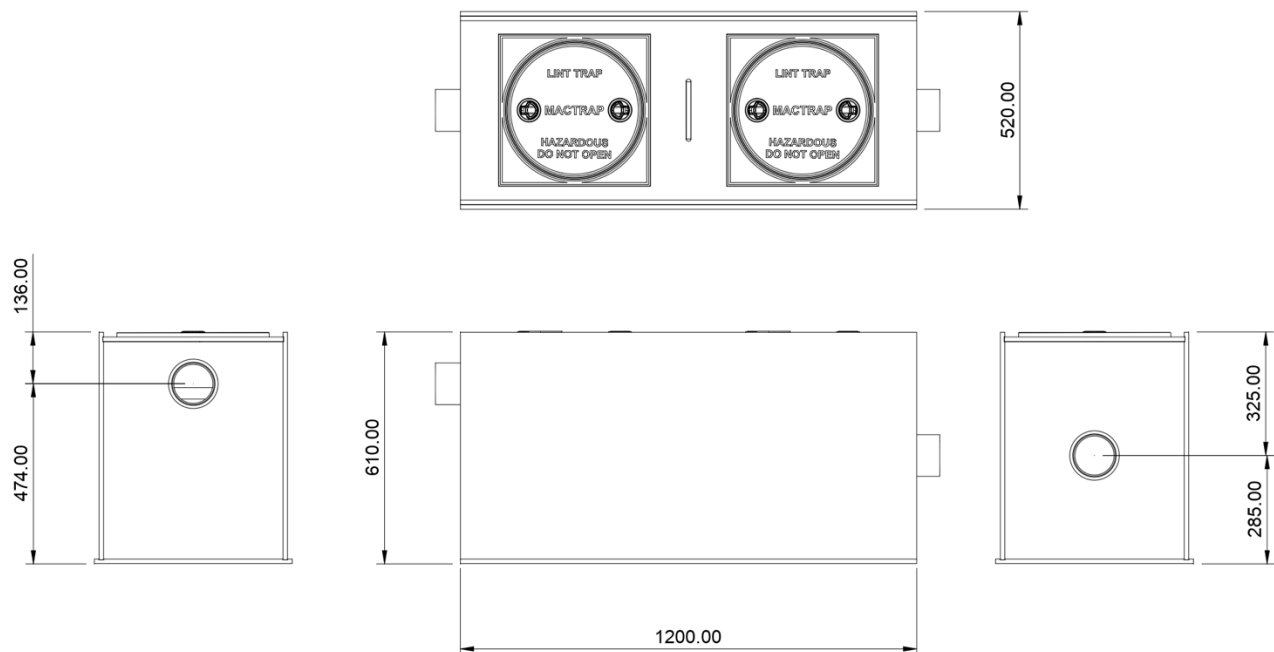
MTFT6M Lint trap – above ground version.

Product code	MTLT6MS	MTLT6MA	MTLT6MD
Installation	Above ground	Below ground Pedestrian	Below ground Vehicular
Commercial Machine Capacity	6	6	6
Treatment	Filtration	Filtration	Filtration
Lint Containment Area (65%)	3,360cm ²	3,360cm ²	3,360cm ²
Length	1200 mm	1200 mm	1200 mm
Width	520 mm	520 mm	520 mm
Height	600 mm	1050 mm	1050 mm
Weight	85 kgs	95 kgs	125 kgs
Inlet centre – (Base/FFL)	474/136 mm	474/586 mm	474/586 mm
Outlet centre – (Base/FFL)	285/325 mm	285/775 mm	285/775 mm
Connections	100mm DWV	100mm DWV	100MM DWV
Sampling Chamber	MTIC350S	MTIC350A	MTIC350D





DIMENSIONS



RESIDUAL TEMPERATURE

The 6M is NOT designed for dilution of high temperature wastewater used for thermal disinfection.

Hospital laundries have strict hygiene practices that must adhere to the Australia/New Zealand Laundry Practice AS/NZS 4146:2000 which includes thermal or chemical disinfection. Thermal disinfection requires washing at a minimum of 65°C and for not less than 10 minutes. Or a minimum of 71°C and for not less than 3 minutes.

Lint trap sizing for hospital laundromats needs to include sufficient capacity to allow the wastewater to cool to a temperature required by the local council – typically this is a maximum of 40 degrees. Mactrap lint traps are available in larger sizes up to 6000 litres with sufficient capacity to dilute and cool wastewater. Contact Mactrap for more information.

WARRANTY



The Mactrap lint trap is warranted for impermeability, fitness for use and structural stability for five (5) years. The manufactured unit is warranted for quality of manufacture for one (1) year provided the lint trap is installed and operated in accordance with the specifications provided with each unit. Mactrap warranty does not include maintenance and servicing of the lint trap.





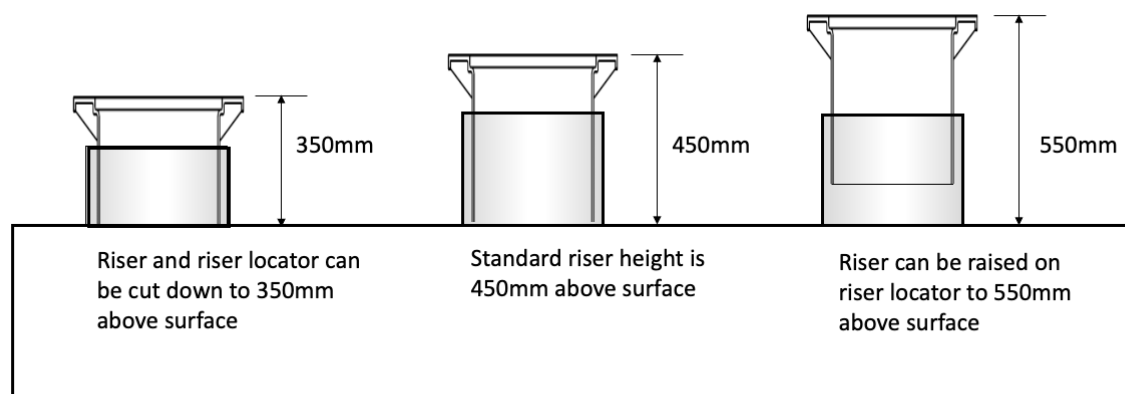
COVERS AND RISERS

- Installation options of pedestrian strength (Class A) and vehicular strength (Class D) covers.
- Standard riser height has inherent flexibility and extensions are available for deeper installations.
- Fully sealed for odour protection.
- The concrete or other medium surrounding the covers must be engineered (see installation guide).

Type	Class	Typical Use	Nominal Wheel Loading (kg)	Serviceability Design Load (kN)	Ultimate Limit State Design (kN)
	A	Areas accessible by pedestrians	330kg	6.7kN	10kN
	D	Major roads including freeway and motorway shoulders. Warehouse and loading docks.	8,000kg	160kN	240kN

STANDARD RISERS

The standard riser height of 450mm can be adjusted from 350mm to 550mm.



OPERATION

Mactrap lint traps are designed to trap fine sediment, laundry lint and discharged objects from washing machines in commercial laundries or industrial installations. Filter baskets are required because suspended particulates such as laundry lint cannot be trapped through gravity settlement.

The 6M is fitted with two mesh filter baskets constructed with a mesh sized to capture objects such as buttons and coins as well as lint. The 6M is designed to manage the simultaneous outflow from six (6) commercial washing machines.





Water temperature

The lint trap is certified to operate with water temperatures up to 60°C. Higher continuous temperatures may cause sagging when installed above ground.

Chemicals

The lint trap is tested to handle laundry and most other chemicals especially as they are usually diluted with water. Do not discharge pure benzene or concentrated sulphuric acid through the lint trap.

Clean Out

The frequency with which the filter baskets require cleaning is totally dependent on how much lint and other particulate matter is intercepted. Lint traps are sized to allow the laundry machines to operate normally when up to 65% of the surface area of the filter basket is clogged. Clogging of more than 65% may cause backpressure to the machine discharge. Mactrap recommends that the baskets are initially cleaned weekly until a service requirement pattern is established.

The lint trap will need to be vacuum cleaned bi-annually to remove fine sediments not captured by the filters.

Blockage Bypass

The lint trap is equipped with blockage bypasses if the filter baskets are excessively clogged. The bypasses are designed to protect the laundry machines; however, the operator would be in breach of their trade waste agreement when the bypasses are active.

The lint trap can be optionally fitted with audible alarms to indicate when the filter baskets are excessively clogged and require cleaning.

LIFTING (PUMPING) SOLUTIONS

All Mactrap lint traps can be matched with lifting solutions specified to the hydraulic load of the lint trap. Chambers can be installed above ground, inground, internal or external. Lifting solutions facilitate the installation of commercial operations in basements or support inground lint traps where the lint trap outlet is below the sewer line.

Contact MACTRAP for more details.

